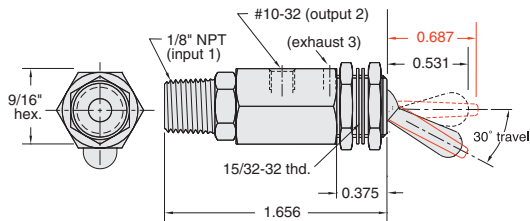
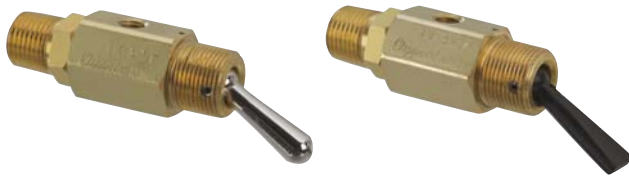




3-WAY TOGGLE VALVES

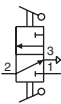
2 Pos. N.C. Poppet w/Momentary Actuation



Input Pressure: 300 psig max.

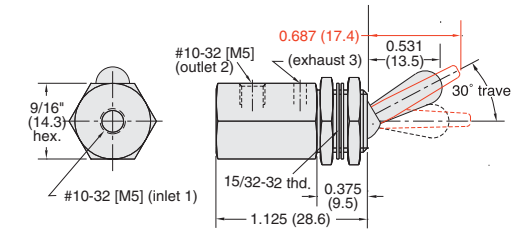
Air Flow: 4.0 scfm @ 50 psig; 6.8 scfm @ 100 psig

Force For Full Stem Travel: 12 oz. nominal



Part No.	Description
TV-3MP	2 Position Poppet Valve, NP Steel Toggle
TV-3MFP	2 Position Poppet Valve, Plastic Toggle

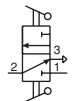
2 Pos. N.O. Poppet w/Momentary Actuation



Input Pressure: 150 psig/10 bar max.

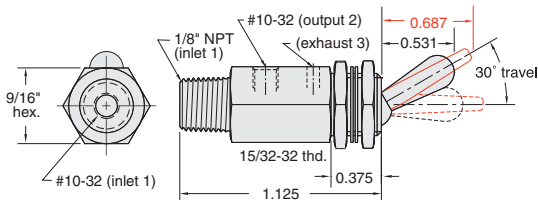
Air Flow: 4.0 scfm @ 50 psig; 6.8 scfm @ 100 psig;
170 lpm @ 6 bar

Force For Full Stem Travel: 12 oz. nominal



Part No.	Description
TVO-3M	2 Position Spool Valve, NP Steel Toggle, #10-32
TVO-3M-M5	2 Position Spool Valve, NP Steel Toggle, M5
TVO-3MF	2 Position Spool Valve, Plastic Toggle, #10-32
TVO-3MF-M5	2 Position Spool Valve, Plastic Toggle, M5

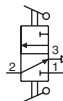
2 Pos. N.O. Poppet w/Momentary Actuation



Input Pressure: 150 psig max.

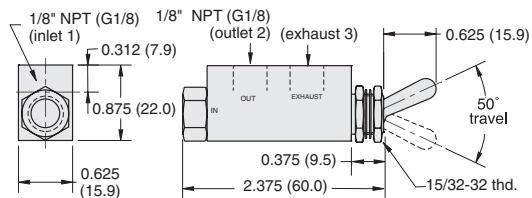
Air Flow: 4.0 scfm @ 50 psig; 6.8 scfm @ 100 psig

Force For Full Stem Travel: 12 oz. nominal



Order Information	
TVO-3MP	2 Position Spool Valve, NP Steel Toggle
TVO-3MFP	2 Position Spool Valve, Plastic Toggle

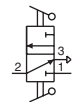
2 Position Poppet Valves



Input Pressure: 300 psig/21 bar max.

Air Flow: 14 scfm @ 50 psig; 25 scfm @ 100 psig;
600 l/min @ 6 bar

Force For Full Stem Travel: 16 oz. nominal



Part No.	Description
MJTV-3	2 Position Poppet Valve, 1/8\" NPT
MJTV-3-MG	2 Position Poppet Valve, G1/8

15/32 Panel Mounting Nut



Brass with black or bright nickel finish

Part No.	
11406-1	Black
11406-2	Bright